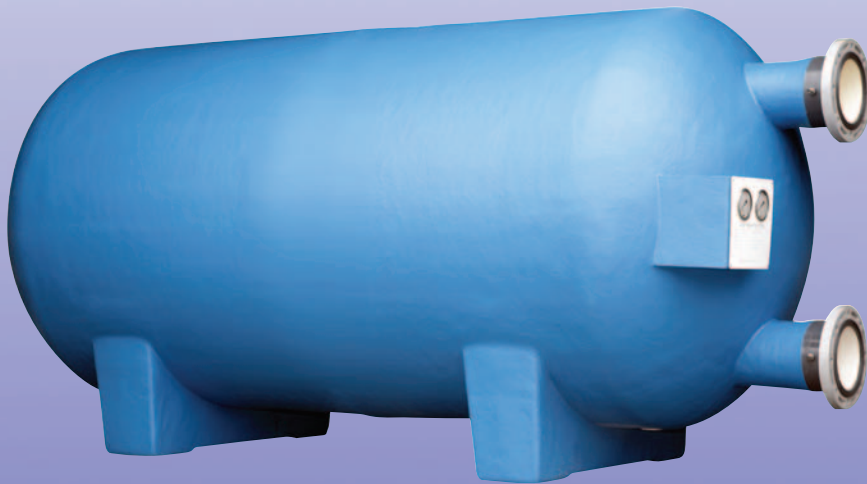


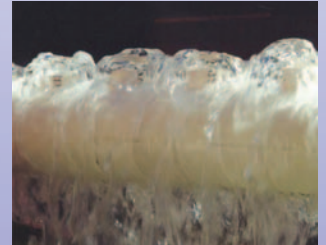


CHADSON GRANULAR FILTERS

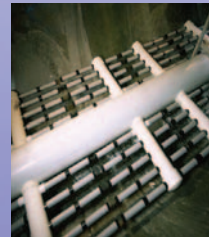
MHS-4000 | MHS-4250 | MHS-4500



FloModuLata Distributor



Calibrated inlet nozzles, providing even distribution of incoming soiled water



FloModuLata Underdrain



MHS 4000 series

NOT ALL HORIZONTAL FILTERS ARE CREATED EQUAL

Whilst most horizontal filters may seem to look the same, their cost of ownership will vary substantially according to a number of critical design issues. Such issues include process efficiency, the method of manufacture, and the choice of construction materials. Given a commercial pool filter is required to satisfy a very critical (public health) need, its initial purchase should not just be made on the basis of lowest apparent cost.

As many astute & discerning pool professionals have identified that (over a period of more than 30 years) **CHADSON GRANULAR FILTERS** will provide unique process benefits & undisputed value throughout its very considerable design life. These attributes are best reflected by the ability of CHADSON filters to provide longer filter runs (with less backwashing) and far less frequent replacement of the filtering media. In combination with a robust Australian-made FRP pressure vessel, many of these unique benefits can be attributed to the patented technology that is used within a CHADSON filter.

CHADSON's patented FloModuLata™ technology (Australian Patent 743517) uniquely splits and distributes the water streams within the filter, during its filter & backwash cleaning process. By providing full lateral coverage and parallel (up & down) water streams, this unique processing, provides unparalleled efficiencies. These process efficiencies are widely known and accepted to provide longer filter runs, less frequent backwashing, lower wash water consumption, lower energy costs, and less frequent media and lateral replacements.

Even if you do pay slightly more to procure an Australian-made CHADSON filter, you can be confident that your good judgement will be rewarded (many times over) by securing far lower whole of life costs.

KEY FEATURES AT A GLANCE

- Designed & manufactured in Australia, using locally available resins systems, which are especially formulated for Australia's harsh climatic conditions.
- Chadson filters may be installed indoors or outdoors. Their non-corrosive construction materials are equally suitable for use with either fresh water or seawater.
- Heavy duty, contact-moulded FRP pressure vessels; free of all the potential service issues that are frequently associated with cheaper/imported filament wound tanks. If a tank leak does occur, filament wound tanks are widely considered to be non-repairable.
- Straight-through internal pipe headers (dn200) resulting in minimum head loss, low line- velocity, and reduced energy costs.
- Multiple and precisely calibrated Soiled Water (SW) distribution nozzles which provide even flow, over ALL of the available filter area, not parts thereof.
- Full-coverage & extensive underdrain system, using dn25 slotted laterals that are injection moulded from high impact, engineering plastics.
- Full-size, internal-opening access hatch(s) providing convenient access, without the need to remove any face plumbing.
- 100% of all filter production is hydrostatically pressure tested and certified as genuine pressure vessels.
- Appropriate fittings & instrumentation (twin pressure gauges, Kinetic Air Vent/Vacuum breaker, screened drain cock, etc.,) supplied as standard fitments.



CHADSON GRANULAR FILTERS

MHS-4000 | MHS-4250 | MHS-4500

OTHER BENEFITS & OPTIONS

- Free technical support and engineering advice that will guarantee a predictable result each and every time. We are not just catalogue salesman; we have worked in the swimming pool industry since 1976, and we understand the issues and the challenges.
- Every filter is supplied with comprehensive installation & operating Instructions that are designed to make your job easier. Our instructions contain valuable information, which is especially designed for commercial pools.
- Being Australian-made, both standard and custom-made product can be readily supplied within acceptable delivery times.
- Standard product details may be varied to include the supply of additional access hatches, different connection details, air-scouring, pulse backwashing, lifting lugs, high pressure ratings, face plumbing, manual & automatic backwashing valving.

FINAL WORD

If you are regularly backwashing your filter to maintain a flat and efficient sand bed, you are wasting valuable pool water and you have most probably made a poor buying decision. If you need to regularly replace your filter media & laterals (every 5 years or less), your filter is not backwashing efficiently and you have most probably made a poor buying decision. If your filter develops a leak and it's considered to be non-repairable you have most probably made a poor buying decision. If you have to install your filters inside a plant room because your filter has not been made with a resin system formulated for Australia's harsh conditions you have most probably made a poor buying decision.

With many **CHADSON** filters continuing to provide valuable service after 25 years of continuous service, the product's unique capability and its design life are matters of fact. The design life of a **CHADSON** filter is not reliant upon the interpolation of in-house cyclic pressure tests and the opinion of an overseas filter manufacturer; it's based on proven and extensive case history.

TECHNICAL DATA

	MHS 4000	MHS 4250	MHS 4500
Filter Area (m ²)	4.0	4.25	4.5
Filter Rate (m ³ /hr/m ²)	15 - 42	15 - 42	15 - 42
Flow Range (m ³ /hr)	60 -168	64 -179	67.5 -189
Req'd B.W Flow Rate (m ³ /hr/m ²)	42	42	42
B.W Flow (l/sec)	47	50	53
Wash Water Consumption (m ³)	11.3	12.0	12.7
Max Operating Pressure (kPa)	200	200	200
Test Pressure (kPa)	350	350	350
Shipping Weight (kgs)	350	360	380
Service Weight (kgs)	8260	8400	8660
Refer to Sales Outline for Dimensions			

Unlike the many filter options that are available to you, **CHADSON** filters are tried & proven with the capability to provide very favourable life cycle costs. Good design is not about who can provide the lowest apparent purchase cost; it's more about satisfying an intended duty, with products that will provide process efficiencies, reliable performance, and predictable whole of life costs.

If issues do occur during the life of **CHADSON** product, it's important to note that we are here to support you. Not only will you feel good in supporting an accredited Australian made product, you will be rewarded with the performance, the low cost of ownership and the service that is often seems elusive with cheaper, imported product.

If you are considering a filter replacement, designing a new pool, or are just plain unhappy with the performance of your existing system, **contact us today.**

Australia 08 9344 3611
 International 61 8 9344 3611
 Email enquiries@chadson.com.au

